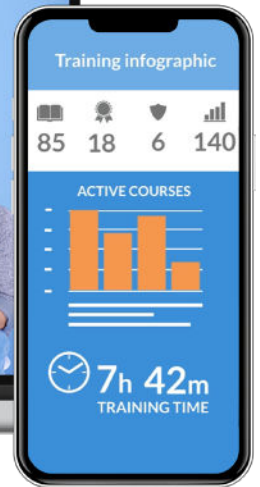
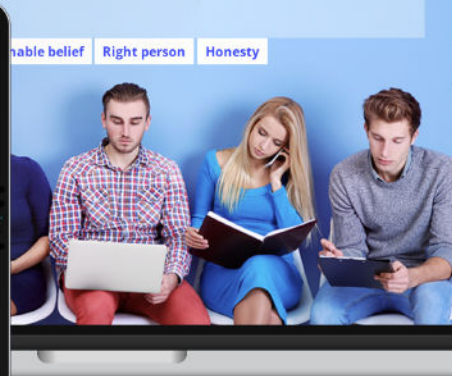
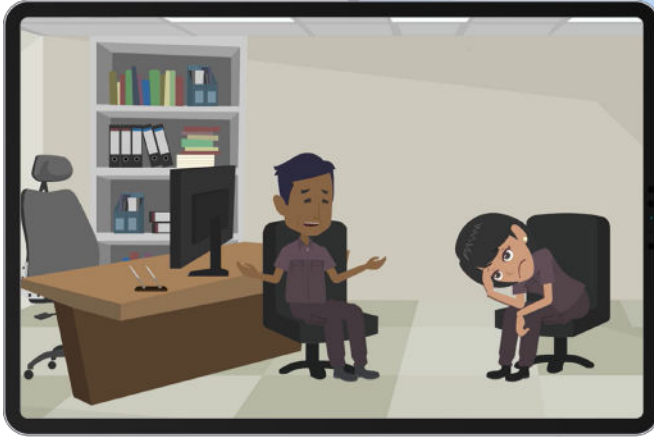
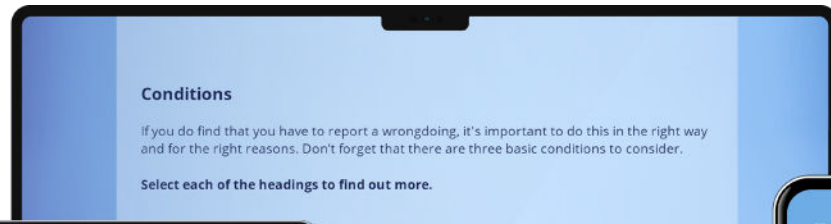
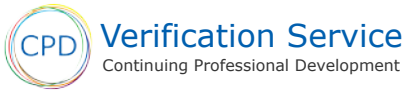


WHISTLEBLOWING



OVERVIEW

OBJECTIVES

Employers have an obligation to provide an open and transparent workplace, where employees feel safe to speak up on issues they are concerned about. It is good practice to develop a clear whistleblowing procedure that all employees are aware of and understand. This will ensure employees feel safe to blow the whistle on issues that are in the public interest.

This whistleblowing e-learning course focuses on how employees are protected by whistleblowing law when they are doing it for the right reasons, and why whistleblowing is important to both them and the organisation. There is also an emphasis on ensuring whistleblowing standards are set and followed with the aim of creating an open and supportive culture.

- Outline organisational compliance with whistleblowing guidelines
- Help ensure personal compliance with whistleblowing procedures
- Improve understanding of your rights regarding whistleblowing
- Develop a compliance culture that works
- Avoid potentially costly litigation, fines, employee dissatisfaction and bad publicity for your business



DURATION

45 minutes. Including interactions and downloads



AUDIENCE

Whistleblowing processes and procedures are an important factor for all organisations. Therefore, this course should meet the needs of any employee



CERTIFICATION

Upon completion of the course the learner will receive a CPD certificate.

